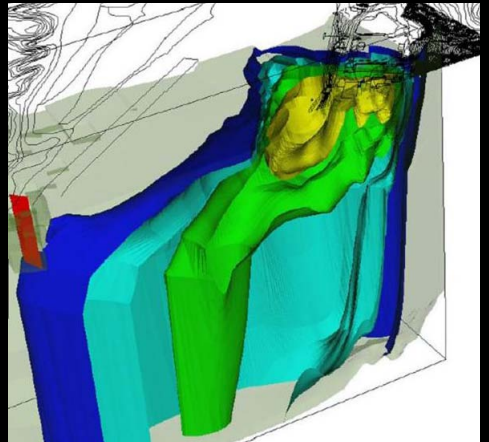


# Environmental Engineering & Natural Resources



Our environmental engineers and technical staff provide customers with planning, assessments, design, project management and permit acquisition for a variety of projects. Sebago Technics assists with the design of municipal and private water, wastewater and stormwater conveyance systems. Our experienced team has completed miles of sewer separation projects, designed sanitary pump stations and solid waste facilities. We also support businesses and landowners with the completion of Environmental Site Assessments (ESA's) and remediation prior to land transfers or project development.

We conduct groundwater hydrogeological assessments of contaminated sites and for the design of wastewater disposal and treatment systems. In addition, we are well versed in Coastal wave modeling assessment for flooding and FEMA mapping including inland rivers and streams.

Assessments and watershed modeling develop stormwater design solutions along with Stormwater Pollution Prevention Plans (SWPPP) and Spill Prevention Control and Countermeasure (SPCC) plans. We also assist with compliance monitoring and permitting under the National Pollutant Discharge Eliminations System (NPDES) and Multi-Sector permitting.

- **Maine Coast Heritage Trust Natural Resource Inventories Islands and Coastal Properties North Haven to Mount Desert Island**

- Natural resource field mapping of a variety of natural resources, particularly vegetation habitat communities, on 11 different preserves owned by Maine Coast Heritage Trust, and publishing the data in ArcGIS.

- **City of Portland, ME**

- Challenging FEMA's proposed mapping of the Commercial Street waterfront as a VE-flood zone by using a large complex 3-D wave model that had more sophistication than the FEMA coastal flood mapping methods.

- **Leucadia Financial Northeast Point, Islesboro, ME**

- Complex 3-dimensional groundwater flow and transport modeling, including density-dependent saltwater intrusion modeling to evaluate the impact of a controversial 76-acre housing development on this Maine island.

- **Turner Farm Restoration North Haven, ME**

- Inventory of natural resources on 260 acres of land. Delineation, classification, and GPS location of the wetlands was performed. Class 'B' High Intensity Soil Survey was prepared to classify all soils on the property. A wetlands map, a soils map, and natural resources report were final deliverables.

- **Freeport Village Station Freeport, ME**

- Sebago Technics conducted Phase II remediation in conjunction with the site's application to the Maine Department of Environmental Protection (MDEP) Voluntary Response Action Program (VRAP). Working closely with the developer and the MDEP, coordinated the most cost-effective and permanent solutions to remediate the site in concert with the construction schedule.